

COUNTY OF LOS ANGELES

ROAD DEPARTMENT



SOUTH GATE QUAD

BENCH MARKS

1960

PREFACE

The Road Department level net is composed of some 1,000 miles of levels supporting more than 10,000 bench marks. In 1955, a major re-adjustment of the net was undertaken resulting in revised bench mark elevations of which the accompanying list is a part.

To facilitate the adjustment, indexing, and distribution of adjusted values of the net, the county territory was divided into 30 quads or areas. For identification purposes each quad was given a name, viz., "Rosemead", "La Mirada", "Santa Fe", etc. When bench marks and elevations in the Road Dept. net are used, the name of the quad in which the bench mark is located and the date of the adjustment of the elevation must be included in the bench mark description, e.g.,

SO 908 - L & T in E. cb. Miscatel Ave. on C/L prod.
Scott St. (Rosemead - 1955) Elev. 333.517

It is expected that this general adjustment will, for the most part, remain sound for the next 15 or 20 years. As new circuits are completed, however, re-adjustment of individual quads may become advisable. It is expected that these subsequent adjustments will be in the nature of a few hundredths of a foot. When a quad is re-adjusted, new elevation lists will be published and the date of the re-adjustment will replace the "1955" at the end of the bench mark description. Two bench marks in the same quad with different adjustment dates will not normally join each other. Since all adjustments taper out to nothing at the periphery of the quad, any bench mark in one quad will join any bench mark in another quad regardless of their respective adjustment dates.

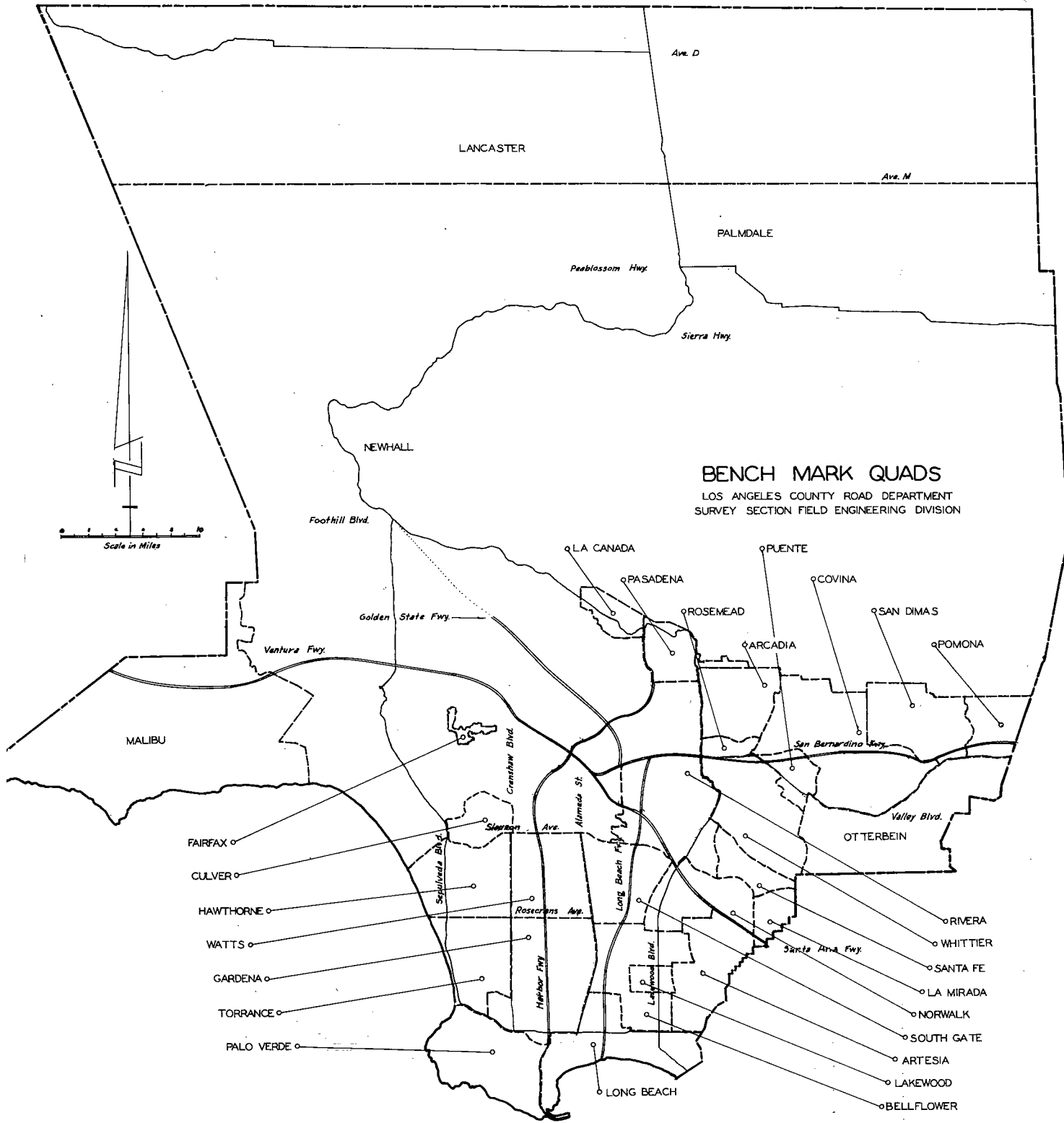
The basic accuracy of the net is reflected by an indicated field probable error of ± 0.12 foot per mile of leveling as determined from 298 conditions of closure. However, many years experience in vertical control in the greater Los Angeles basin & Antelope Valley indicate that because of varying degrees of subsidence and heaving, the true datum is recovered only by obtaining substantial agreement of a number of bench marks.

The users of this net are invited to assist in its maintenance by notifying this Department of cases of obliteration, apparent mistakes in descriptions or elevations, and proven disturbance of bench marks.

Datum: U.S. Coast and Geodetic Survey Sea Level Datum of 1929, through the medium of the Los Angeles County Engineer Precise Level Net, 1952 Adjustment.

Abbreviations Used in Bench Mark Listings

ABUT--Abutment	L+BN--Lead and Bench Mark Nail
ANG PT--Angle Point	L+BR--Lead and Brad
BC--Beginning of Curve	L+N--Lead and Nail
BCR--Beginning of Curb Return	L+PK--Lead and PK Nail
BLDG--Building	L+SPK--Lead and Spike
BT SPK--Boat or Bolt Spike	L+T--Lead and Tack
CB RET--Curb Return	MCR--Middle of Curb Return
C/L INT--Center Line Intersection	MKD--Marked
C/L PROD--Center Line Produced	NR--Near
COE--Corps of Engineers	OPP--Opposite
CONC--Concrete	PI--Point of Intersection
CS MON--County Surveyor Monument	PK+W--PK Nail and Washer
CS BR CAP--County Surveyor Brass Cap Monument	P/L--Property Line
CT SPK--Cut Spike	P O S T--Point on Semi-tangent
CTR--Center	PP--Power Pole
DN--Down	PVMT--Pavement
DR--Driveway	R D--Road Department
EC--End of Curve	RDBM--Road Department Bench Mark
ENT--Entrance	RR--Railroad
FC--Flood Control (Dept. LA County)	SPK T+W--Spike, Tin and Washer
FTG--Footing	USC+GS--United States Coast and Geodetic Survey
HDWL--Headwall	USGS--United States Geological Survey
HSE--House	WK--Walk
IP--Iron Pipe	±--Plus or Minus
LACE--Los Angeles City Engineer	+--And



BENCH MARK QUADS

LOS ANGELES COUNTY ROAD DEPARTMENT
 SURVEY SECTION FIELD ENGINEERING DIVISION

LANCASTER

PALMDALE

NEWHALL

MALIBU

OTTERBEIN

FAIRFAX

CULVER

HAWTHORNE

WATTS

GARDENA

TORRANCE

PALO VERDE

LA CANADA

PASADENA

ROSEMEAD

ARCADIA

COVINA

SAN DIMAS

POMONA

RIVERA

WHITTIER

SANTA FE

LA MIRADA

NORWALK

SOUTH GATE

ARTESIA

LAKEWOOD

BELLFLOWER

Ave. D

Ave. M

Peablossom Hwy.

Sierra Hwy.

Foothill Blvd.

Golden State Fwy.

Ventura Fwy.

San Bernardino Hwy.

Valley Blvd.

Santa Ana Fwy.

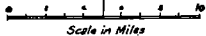
Alameda St.

Sierran Ave.

Rosecrans Ave.

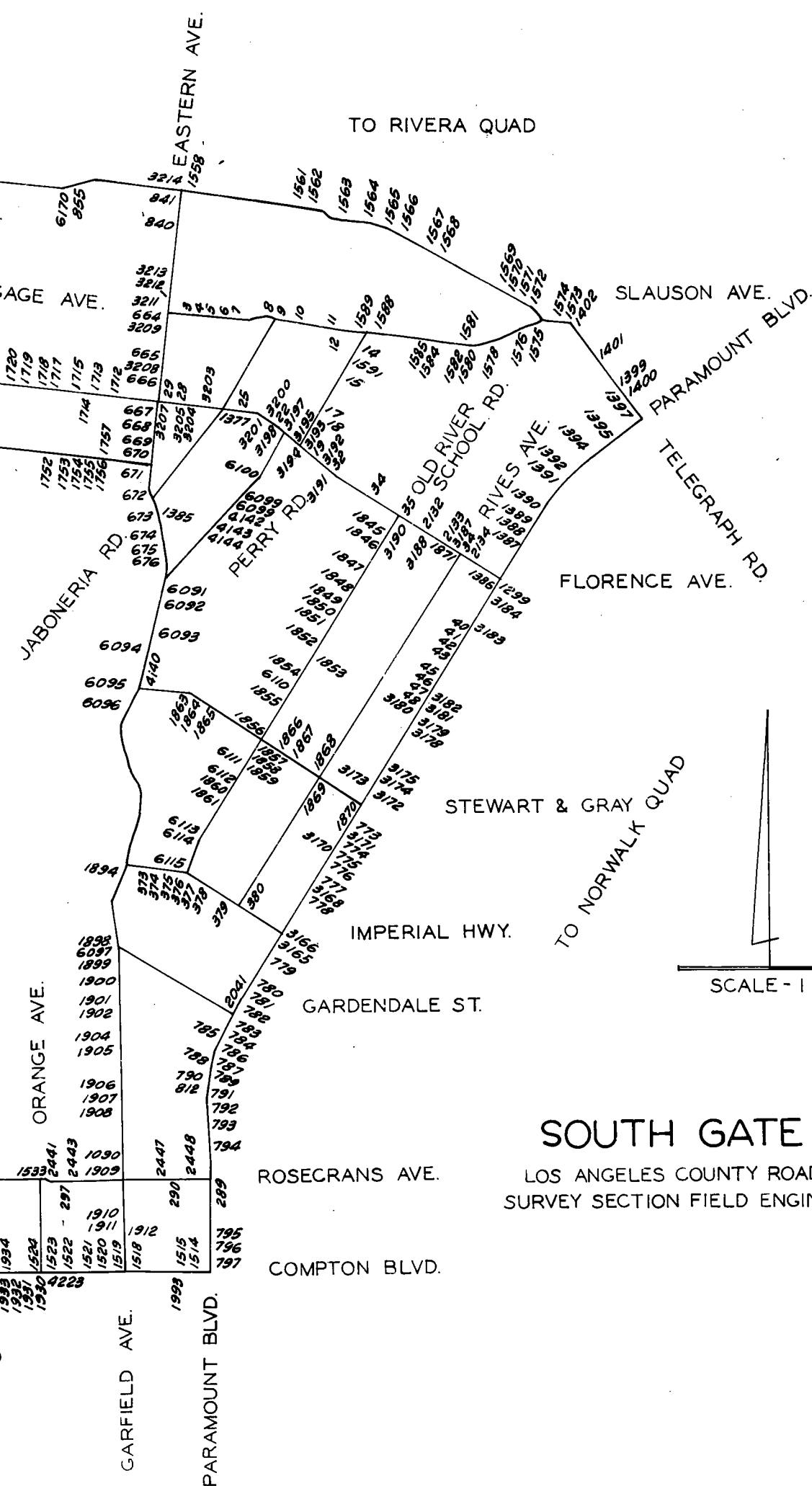
Harbor Fwy.

LONG BEACH



Scale in Miles

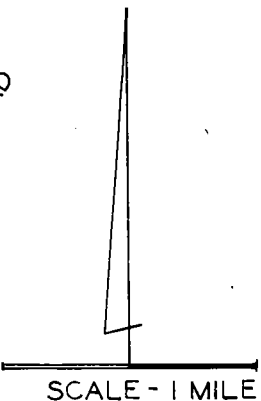




TO RIVERA QUAD

SOUTH GATE QUAD

LOS ANGELES COUNTY ROAD DEPARTMENT
SURVEY SECTION FIELD ENGINEERING DIVISION



ROSECRANS AVE.

COMPTON BLVD.

GARDENDALE ST.

IMPERIAL HWY.

STEWART & GRAY QUAD

FLORENCE AVE.

TELEGRAPH RD.

SLAUSON AVE.

EASTERN AVE.

ORANGE AVE.

GARFIELD AVE.

PARAMOUNT BLVD.

TO NORWALK QUAD

ORANGE AVE.

JABONERIA RD.

PERRY RD.

OLD RIVER SCHOOL RD.

RIVES AVE.

PARAMOUNT BLVD.

QUAD-YEAR	ELEV	DESCRIPTION (INCLUDE QUAD AND YEAR IN DESCRIPTION)	BM NUMBER
SO GATE (1960)	129.071	L+SPK IN W CB EASTERN AVE 77FT± S C/L GAGE ST	SY 1
SO GATE (1960)	129.221	L+SPK N EDGE PVMT 12FT± N C/L INT GAGE AVE + AJAX AVE	SY 3
SO GATE (1960)	129.789	L+SPK PVMT 12FT± S C/L GAGE AVE 500FT± E C/L AJAX AVE	SY 4
SO GATE (1960)	129.826	L+SPK PVMT 12FT± N C/L GAGE AVE 500FT± E C/L AJAX AVE	SY 5
SO GATE (1960)	129.034	L+SPK PVMT 12FT S C/L GAGE AVE 2FT E C/L COLMAR AVE	SY 6
SO GATE (1960)	129.036	L+SPK PVMT 12FT N C/L GAGE AVE 2FT E C/L COLMAR AVE	SY 7
SO GATE (1960)	128.317	L+BN 1FT± S BCR @ SW COR GAGE AVE + JABONERIA RD 58FT± S + 20FT± W C/L INT	SY 8A
SO GATE (1960)	129.282	L+T 2FT± E BCR @ SE COR GAGE AVE + JABONERIA RD 28FT± S + 47 FT ± E C/L INT	SY 9A
SO GATE (1960)	130.613	L+SPK PVMT 12FT± N C/L GAGE AVE 50FT± E C/L DARWELL AVE	SY 10
SO GATE (1960)	134.592	L+N S END 2ND GAS ISLAND (ABANDONED) 50FT± S + 80 FT± E C/L INT GAGE AVE + GARFIELD AVE	SY 12
SO GATE (1960)	133.275	BOLT @ C/L FOSTER BRIDGE RD 146.39 E INT PERRY RD	SY 14
SO GATE (1960)	127.210	L+N E CB PERRY RD 30FT± S CB RET @ SE COR LOVELAND ST + PERRY RD	SY 15A
SO GATE (1960)	123.445	L+SPK N END OF GAS 55FT± S C/L FLORENCE PL 60FT± W C/L PERRY RD	SY 17
SO GATE (1960)	121.981	L+SPK WK 43FT± S C/L FRY ST PROD 30FT± W C/L PERRY IN FRONT OF CHURCH ENT	SY 18
SO GATE (1960)	121.938	L+SPK S END GAS ISLAND 52FT± E C/L PERRY RD + 60FT± N C/L FLORENCE AVE	SY 19
SO GATE (1960)	120.499	L+SPK WK 60FT± S C/L FLORENCE AVE + 50FT± E C/L GARFIELD AVE	SY 21
SO GATE (1960)	120.818	L+SPK WK 3-FT± E C/L TOLER AVE + 105FT± S C/L FLORENCE AVE	SY 22
SO GATE (1960)	120.836	L+T W CB IRA AVE NR S END CB RET @ SW COR FLORENCE AVE	SY 25
SO GATE (1960)	123.056	L+SPK STATION DRWY 45FT± W C/L AJAX AVE + 55FT± N C/L FLORENCE AVE	SY 28
SO GATE (1960)	122.177	L+SPK E CB EASTERN AVE NR END CB RET @ NE COR FLORENCE AVE	SY 29
SO GATE (1960)	121.211	L+SPK WK 65FT± S/O C/L FLORENCE AVE 30FT± E/O C/L EMIL ST	SY 32
SO GATE (1960)	125.104	SPK + L NE BASE LEG TRANS TOWER NO 259D7 ON E SIDE RIO HONDO RIVER 75FT± S/O C/L FLORENCE AVE	SY 34
SO GATE (1960)	124.078	L+N PVMT C/L OLD RIVER SCHOOL RD 50FT± S/O C/L FLORENCE AVE	SY 35

QUAD-YEAR	ELEV	DESCRIPTION (INCLUDE QUAD AND YEAR IN DESCRIPTION)	BM NUMBER
SO GATE (1960)	126.615	RDBM TAG S CB 1FT± W/O BCR @ SW COR FLORENCE AVE + RIVES AVE 38FT± S + 55FT± W/O C/L INT	SY 37A
BASELINE (1955)	122.524	L+BN 17FT± W CB RET SW COR HARPER AVE + PARAMOUNT BLVD	SY 40A
BASELINE (1955)	121.079	L+SPK 5FT± S CB RET SW COR 7TH ST + PARAMOUNT BLVD	SY 41
BASELINE (1955)	118.719	L+SPK 13FT± S CB RET SW COR 6TH ST + PARAMOUNT BLVD	SY 42
BASELINE (1955)	117.993	L+SPK 8FT± N CB RET NW COR 5TH ST + PARAMOUNT BLVD	SY 43
BASELINE (1955)	117.502	L+SPK 12FT± N CB RET NW COR 4TH PL + PARAMOUNT BLVD	SY 45
BASELINE (1955)	116.813	L+SPK 6FT± S CB RET SW COR 3RD ST + PARAMOUNT BLVD	SY 46
BASELINE (1955)	116.473	L+SPK 18FT± N CB RET NW COR 2ND ST + PARAMOUNT BLVD	SY 47
BASELINE (1955)	116.211	L+T CTR CB RET NE COR FIRESTONE BLVD + PARAMOUNT BLVD	SY 48A
BASELINE (1955)	72.324	L+T E CB ALAMEDA ST 50FT± N C/L ROSECRANS BLVD	SY 169A
BASELINE (1955)	73.731	4.5 IN IP WITH L+T 6IN BACK WK ON SE COR PARAMOUNT BLVD + ROSECRANS AVE 244FT± S C/L 50FT± E C/L INT MKD (LAC 32)	SY 288A
BASELINE (1955)	77.795	L+BN IN SE COR OF SIGNAL BASE NO 130 ON SE COR ROSECRANS AVE + PARAMOUNT BLVD 41FT± S + 65FT± E C/L INT	SY 289A
SO GATE (1960)	OUT 95.519	L+T CONC DRWY 43FT± S C/L ROSECRANS AVE 1FT± E OF W EDGE DRWY TO HSE NO 7202	SY 297
SO GATE (1960)	94.314	L+T @ ECR @ NW COR IMPERIAL HWY + MADGE AVE	SY 373
SO GATE (1960)	93.800	L+T CB 1FT± N ECR @ NW COR IMPERIAL HWY + CASSINA AVE	SY 374
SO GATE (1960)	93.324	L+T CB 1FT± N ECR @ NW COR IMPERIAL HWY + AMERY AVE	SY 375
SO GATE (1960)	92.468	L+T CB 1FT± N ECR @ NE COR IMPERIAL HWY + BEAK AVE	SY 376
SO GATE (1960)	93.292	CE TAG 9FT± S BCR @ NE COR IMPERIAL HWY + OLD RIVER SCHOOL RD 56FT± N/O + 34FT± E/O C/L INT	SY 377A
SO GATE (1960)	96.008	L+T CB 1FT± N ECR NW COR IMPERIAL HWY + AMBL ENT TO RANCHO LOS AMIGOS	SY 378A
SO GATE (1960)	97.467	CS TAG N CB 2FT± W BCR @ NW COR IMPERIAL HWY + RIVES AVE 40FT± N/O + 47FT± W/O C/L INT	SY 379A
SO GATE (1960)	98.144	FD CS BRASS CAP FLUSH AT PROP COR OF IMPERIAL PARK ON NE COR IMPERIAL HWY + RIVES AVE 50FT± N + 30FT± E/O C/L INT	SY 380A
SO GATE (1960)	128.073	L+N E CB EASTERN AVE 3FT± N CB RET @ NE COR LOVELAND ST	SY 664

QUAD-YEAR	ELEV	DESCRIPTION (INCLUDE QUAD AND YEAR IN DESCRIPTION)	BM NUMBER
SO GATE (1960)	125.297	L+N E CB EASTERN AVE 2FT± N CB RET @ NE COR LUBEC ST	SY 665
SO GATE (1960)	123.040	L+N E CB EASTERN AVE 2FT± N CB RET @ NE COR LUDELL ST	SY 666
SO GATE (1960)	120.170	L+T CTR CB RET @ NW COR EASTERN AVE + FRY ST	SY 667A
SO GATE (1960)	119.073	L+N W CB EASTERN AVE NR N END CB RET @ NW COR LIVE OAK ST	SY 668
SO GATE (1960)	117.182	L+T CTR CB RET @ SW COR EASTERN AVE + PRIORY ST	SY 669
SO GATE (1960)	115.756	L+T CTR CB RET @ NE COR EASTERN AVE + CLARA ST	SY 670
SO GATE (1960)	113.177	L+T W CB EASTERN AVE 6FT± N CB RET @ NW COR GOTHAM ST	SY 671
SO GATE (1960)	112.441	L+T W CB EASTERN AVE 6FT± S CB RET @ SW COR COMPTON JABONERIA RD	SY 672
SO GATE (1960)	110.772	L+T E CB EASTERN AVE 8FT± S CB RET @ SE COR MULLER ST	SY 673
SO GATE (1960)	110.438	L+N E CB EASTERN AVE 6FT± S CB RET @ SE COR CECILIA ST	SY 674
SO GATE (1960)	110.023	L+T E CB EASTERN AVE 8FT± S CB RET @ SE COR FOSTORIA ST	SY 675
SO GATE (1960)	109.160	L+T W CB EASTERN AVE C/L PROD SHULL ST	SY 676
BASELINE (1955)	108.639	L+N IN WK 50FT± N C/L COLE ST 50FT± W C/L PARAMOUNT BLVD	SY 773A
BASELINE (1955)	107.723	L+N NR N END CB RET @ NW COR PARAMOUNT BLVD + ALBIA ST	SY 774A
BASELINE (1955)	106.320	CUT SPK CONC PVMT 14FT± W C/L PARAMOUNT BLVD ON C/L PROD ALAMEDA ST	SY 775A
BASELINE (1955)	106.272	L+N CTR CB RET @ SW COR MELVA ST + PARAMOUNT BLVD	SY 776A
BASELINE (1955)	105.113	L+T 14FT± E C/L PARAMOUNT BLVD 11FT± N C/L SPRINGER ST PROD IN CONC PVMT	SY 777A
BASELINE (1955)	104.182	L+T IN CONC 14FT± E C/L PARAMOUNT BLVD 4FT±N C/L QUILL DR PROD	SY 778A
BASELINE (1955)	90.673	L+N NR N END CB RET @ NE COR PARAMOUNT BLVD + ADOREE AVE	SY 779A
BASELINE (1955)	89.399	SPK + W @ INT PARAMOUNT BLVD + DEVENIR AVE	SY 780A
BASELINE (1955)	87.190	ST + W @ INT PARAMOUNT BLVD + COUNTRY FARM DR	SY 781A
BASELINE (1955)	85.993	SPK + W @ INT PARAMOUNT BLVD + PRICILLA AVE	SY 782A
BASELINE (1955)	82.802	CS MON 16FT± W + 5FT± S INT PARAMOUNT BLVD + GARDENDALE ST	SY 783

QUAD-YEAR	ELEV	DESCRIPTION (INCLUDE QUAD AND YEAR IN DESCRIPTION)	BM NUMBER
BASELINE (1955)	83.155	L+T IN E CB PARAMOUNT BLVD 3FT± S OF CB RET @ SE COR PARAMOUNT BLVD + MCKINLEY AVE	SY 784A
BASELINE (1955)	82.722	L+T IN E CB PARAMOUNT BLVD 21FT± N OF CB RET @ NE COR PARAMOUNT BLVD + ALHAMBRA AVE	SY 785A
BASELINE (1955)	81.564	L+T IN N CB GOLDEN AVE 4FT± W OF CB RET @ NE COR PARAMOUNT BLVD + GOLDEN AVE	SY 786B
BASELINE (1955)	81.250	L+T NEAR CTR OF CB RET @ SE COR PARAMOUNT BLVD + GOLDEN AVE	SY 787B
BASELINE (1955)	80.842	L+SPK E CB PARAMOUNT BLVD 50FT± S C/L HARDING AVE PROD	SY 788B
BASELINE (1955)	80.403	L+T IN E CB PARAMOUNT BLVD 35FT± N OF C/L LINCOLN AVE PROD	SY 789A
BASELINE (1955)	79.708	L+T IN E CB PARAMOUNT BLVD 2FT S OF CB RET @ NE COR PARAMOUNT BLVD + FLORENCE AVE	SY 790A
BASELINE (1955)	78.047	L+T IN CB RET @ NE COR PARAMOUNT BLVD + CENTURY BLVD 10FT± S OF BCR ON PARAMOUNT BLVD	SY 791A
BASELINE (1955)	76.586	BT SPK 1FT± S CB RET @ SW COR PARAMOUNT BLVD + PEARLE ST	SY 792A
BASELINE (1955)	75.825	BT SPK BCR @ SW COR PARAMOUNT BLVD + HOWE ST	SY 793A
BASELINE (1955)	76.617	BT SPK CTR CB RET @ NW COR PARAMOUNT BLVD + ROSE ST	SY 794A
BASELINE (1955)	71.848	L+T W CB PARAMOUNT BLVD C/L PROD 3RD ST	SY 795A
BASELINE (1955)	72.955	BT SPK 1FT± S CB RET SE COR PARAMOUNT BLVD + 1ST ST	SY 796A
BASELINE (1955)	72.657	CS MON 17FT± W INT PARAMOUNT BLVD + COMPTON BLVD	SY 797A
BASELINE (1955)	72.712	L+T CTR CB RET SE COR PARAMOUNT BLVD + ADAMS ST	SY 798
BASELINE (1955)	68.962	L+T W CB PARAMOUNT BLVD 2FT± N CB RET @ NW COR MADISON ST + PARAMOUNT BLVD	SY 799A
SO GATE (1960)	135.349	L+BN E CB EASTERN AVE 10FT± N OF LA JCT RR SIDING NR S END CB	SY 840A
BASELINE (1955)	158.084	U S E D L+N W END N HDWL LA RIVER BRIDGE ON SLAUSON AVE	SY 855A
SO GATE (1960)	78.878	CUT SPK CONC PVMT 9FT± W C/L GARFIELD AVE 2FT± N OF N RAIL OF PERR GARFIELD AVE + SANTA ANA LINE HOLLYDALE STATION	SY 1090
BASELINE (1955)	126.051	SET RDBM TAG N CB 1FT± E BCR @ NE COR PARAMOUNT BLVD + FLORENCE AVE 40FT± N + 68FT± E C/L INT	SY 1299A
SO GATE (1960)	121.188	L+T @ E END GAS ISLAND 70FT± S C/L FLORENCE AVE 70FT± @ 90 DEGREES FROM COMPTON JABONERIA RD	SY 1377
SO GATE (1960)	112.799	L+T 15FT± N CB RET @ S EDGE CATCH BASIN @ NE COR COMPTON JABONERIA RD + EASTERN AVE	SY 1385
BASELINE (1955)	124.713	CS BR CAP CONC MON C/L INT PARAMOUNT BLVD + FLORENCE AVE	SY 1386

QUAD-YEAR	ELEV	DESCRIPTION (INCLUDE QUAD AND YEAR IN DESCRIPTION)	BM NUMBER
BASELINE (1955)	127.454	L+BN CTR CB RET SE COR LUBEC ST + PARAMOUNT BLVD	SY 1387A
BASELINE (1955)	127.674	L+BN CTR CB RET NE COR LUBEC ST + PARAMOUNT BLVD	SY 1388A
BASELINE (1955)	130.641	L+BN 2FT± FROM END W CB FRONT HSE NO 9603 PARAMOUNT BLVD	SY 1389
BASELINE (1955)	132.090	L+T CONC CB @ BCR SE COR SUVA ST + PARAMOUNT BLVD	SY 1390
BASELINE (1955)	134.473	L+T CONC CB @ BCR SE COR GALLATIN SCHOOL HOUSE RD + PARAMOUNT BLVD	SY 1391
BASELINE (1955)	134.492	L+T CONC CB @ BCR SW COR GALLATIN SCHOOL HOUSE RD + PARAMOUNT BLVD	SY 1392
BASELINE (1955)	138.713	SQ HD SPK W CB OF SERVICE RD OF PARAMOUNT BLVD 12FT± N C/L PROD BROOKGREEN RD	SY 1394A
BASELINE (1955)	139.675	FD L+BRAD E CB 0.5FT± S BCR @ SE COR PARAMOUNT BLVD + VISTA DEL ROSA SERVICE ISLAND 40FT± E + 50FT± S C/L INT	SY 1395A
BASELINE (1955)	142.240	CS MON IN WELL 8IN DN ON C/L TELEGRAPH RD 20FT± WLY C/L PARAMOUNT BLVD MKD (BELL K4 1941)	SY 1397A
BASELINE (1955)	143.927	RAM NAIL IN N CB TELEGRAPH RD 16FT± E/O CB END 38FT± N/O C/L TELEGRAPH RD + 110FT± W/O C/L CRIDER AVE	SY 1400A
BASELINE (1955)	145.817	RAM SET NAIL IN CONC ISLAND @ CTR OF DRWY TO KAYNAR CO BLDG 7875 42FT± N OF C/L TELEGRAPH RD + 4IN± E OF C/L INT SLAUSON AVE + TELEGRAPH RD 300FT± E OF E END BRIDGE 53-212 OVER RIO HONDO	SY 1401A
BASELINE (1955)	151.909	L+T IN N CB TELEGRAPH RD 4FT± E OF CB RET @ NE COR SLAUSON AVE 40 FT± N + 105FT± E OF C/L INT	SY 1402A
BASELINE (1955)	72.509	L+T CONC PVMT @ C/L INT COMPTON BLVD + COLORADO AVE	SY 1514B
BASELINE (1955)	73.034	L+BN E END GAS ISLAND 75FT± W + 52FT± S C/L INT COMPTON BLVD + VERMONT AVE	SY 1515A
BASELINE (1955)	69.686	L+BN 63FT± E + 52FT± S C/L INT GARFIELD AVE + COMPTON BLVD CONC SERVICE STA YARD	SY 1518
BASELINE (1955)	70.989	L+T W END CONC SLAB 100FT± N + 60FT± E C/L INT GARFIELD AVE + COMPTON BLVD @ FARMER BOYS MKT	SY 1519A
BASELINE (1955)	70.305	L+T W CONC STRIP 53FT± N C/L COMPTON BLVD AT HSE 7243	SY 1520A
BASELINE (1955)	69.747	L+BN N CB COMPTON BLVD 80FT± W C/L INT TEXACO AVE 20FT± N C/L COMPTON BLVD	SY 1521A
BASELINE (1955)	70.528	SPK W CB SAN MARINO AVE 13FT± N BCR @ NW COR SAN MARINO AVE + COMPTON BLVD (MKD KT-5)	SY 1522A
BASELINE (1955)	70.100	L+T E EDGE CONC WK 65FT± E + 40FT± S C/L INT COMPTON BLVD + ORANGE AVE SE COR	SY 1523A
BASELINE (1955)	69.609	L+S W CB ORANGE AVE 13FT± N BCR @ NW COR COMPTON + ORANGE AVE	SY 1524A
SO GATE (1960)	71.476	RD MON @ C/L INT OF ORANGE AVE + ROSECRANS AVE	SY 1533A

QUAD-YEAR	ELEV	DESCRIPTION (INCLUDE QUAD AND YEAR IN DESCRIPTION)	BM NUMBER
BASELINE (1955)	135.775	L+T CTR CB RET SE COR EASTERN AVE + SLAUSON AVE	SY 1558
BASELINE (1955)	140.217	L+T N CB SLAUSON AVE @ WLY END OF CURVE 42FT# N C/L SLAUSON AVE + 300FT# E BOXFORD AVE	SY 1561A
BASELINE (1955)	140.294	L+T CONC WK TO (THOR POWER TOOL CO) OFFICE BLDG NO 6200 48FT# S C/L SLAUSON AVE @ WLY END CURVE 300FT# E BOSFORD AVE	SY 1562A
BASELINE (1955)	142.545	L+LS 1742 TAG W CB MALT AVE 1FT# N CB RET @ NW COR SLAUSON AVE 50FT# S + 26FT# W C/L INT	SY 1563A
BASELINE (1955)	146.107	L+T S CB SLAUSON AVE @ WLY END OF CURVE 38FT# S C/L SLAUSON AVE + 620FT# E MALT AVE	SY 1564A
BASELINE (1955)	148.466	L+T 3FT# E CTR CB RET @ SE COR SLAUSON AVE + GARFIELD AVE 41FT# S + 53FT# E C/L INT	SY 1565
BASELINE (1955)	148.687	L+T N CB SLAUSON AVE 2FT# E CB RET @ NE COR GARFIELD AVE 38FT# N + 65FT# E C/L INT	SY 1566
BASELINE (1955)	152.781	L+BN S CB SLAUSON AVE 3FT# N PP NO 666256E ON LINE W/CHAIN LINK FENCE @ ELY P/L APEX STEEL CO 0.4MI# E GARFIELD AVE	SY 1567A
BASELINE (1955)	159.464	L+T RETAINING WALL N SIDE SLAUSON AVE FRONT OLIVE MEMORIAL PK 50FT# N C/L SLAUSON AVE 5FT# W OF E P/L OF PARK	SY 1568
BASELINE (1955)	158.337	RD MON IN WELL W/COVER ON C/L SLAUSON AVE 25FT# W C/L GREENWOOD AVE	SY 1569
BASELINE (1955)	159.426	L+T S CB 3FT# E BCR @ SE COR SLAUSON AVE + GREENWOOD AVE	SY 1570
BASELINE (1955)	158.115	CS MON IN WELL C/L INT TODD AVE + SLAUSON AVE	SY 1571
BASELINE (1955)	159.148	L+BN 5FT# S BCR @ SW COR TODD AVE + SLAUSON AVE	SY 1572
BASELINE (1955)	152.510	L+T IN S CB TELEGRAPH RD 5FT6IN# E/O CB RET @ SE COR SLAUSON AV 40FT# S + 48FT# E OF C/L INT	SY 1573A
BASELINE (1955)	157.196	TOP RD MON IN WELL C/L INT GAGE AVE + SLAUSON AVE	SY 1574A
SO GATE (1960)	149.854	RD MON IN WELL (POSSIBLE PI) 150FT# S C/L PERR ON GAGE AVE	SY 1575
SO GATE (1960)	146.784	CS MON IN WELL C/L INT ZINDELL AVE + GAGE AVE	SY 1576
SO GATE (1960)	145.477	CS MON IN WELL C/L INT KUHL DR + GAGE AVE	SY 1578
SO GATE (1960)	145.882	CS MON IN WELL C/L INT LANTO ST + GAGE AVE	SY 1580
SO GATE (1960)	145.209	CS MON IN WELL PI OF CURVE 30FT# W C/L INT AGRA ST + GAGE AVE	SY 1581
SO GATE (1960)	146.228	L+N CONC WK DEL RIO SANITORIUM NO 7004 GAGE AVE NEAR CONC PILLAR OF SMALL GATE	SY 1582
SO GATE (1960)	141.455	RDBM TAG S CB 1FT# E BCR @ SE COR GAGE AVE + CHALET DR 28FT# S + 45FT# E C/L INT	SY 1584

QUAD-YEAR	ELEV	DESCRIPTION (INCLUDE QUAD AND YEAR IN DESCRIPTION)	BM NUMBER
SO GATE (1960)	141.682	L+BN 1FT± E BCR E DRWY GAGE DRIVE-IN THEATRE 70FT± W C/L INT GAGE AVE + CHALET DR N SID E GAGE AVE	SY 1585
SO GATE (1960)	137.465	CS MON IN WELL (APPROX) C/L INT PERRY RD + GAGE AVE	SY 1588
SO GATE (1960)	137.252	L+T E CB RET ENT MOUNT CARMEL CEMETERY NO 6501 GAGE AVE 25FT± N C/L GAGE AVE	SY 1589A
SO GATE (1960)	135.127	L+T NW COR CONC WK SE COR PERRY RD + FOSTER BRIDGE BLVD FRONT BLDG NO 6501	SY 1591
SO GATE (1960)	141.335	L+BN IN CONC ABUT NE COR LA RIVER BRIDGE ON FLORENCE AVE	SY 1712
SO GATE (1960)	141.503	L+BN 1FT± E END OF BRIDGE ON N CB @ NW COR OF LA RIVER BRIDGE ON FLORENCE AVE	SY 1713
SO GATE (1960)	141.572	L+BN 1FT± E OF END OF BRIDGE ON S CB @ SW COR LA RIVER ON FLORENCE AVE	SY 1714
SO GATE (1960)	123.175	L+B 8FT± W BCR @ NE COR WALKER AVE + FLORENCE AVE	SY 1715
SO GATE (1960)	125.662	L+B 6FT± E BCR @ NW COR SHERMAN WAY + FLORENCE AVE	SY 1717
SO GATE (1960)	126.083	L+B CTR CB RET @ NE COR WILCOX AVE + FLORENCE AVE	SY 1718
SO GATE (1960)	126.316	L+B 8FT± W BCR SE COR WILCOX AVE + FLORENCE AVE	SY 1719
SO GATE (1960)	126.627	L+BN W CB HELIOTROPE AVE 67FT± N C/L FLORENCE AVE	SY 1720
SO GATE (1960)	130.711	L+BN E CB KING AVE 77FT± N C/L FLORENCE AVE	SY 1723
SO GATE (1960)	134.347	L+BN @ BCR NW COR WOODWARD AVE + FLORENCE AVE 80FT± N C/L FLORENCE AVE	SY 1724
SO GATE (1960)	132.291	L+T 3FT ± S CTR CB RET @ SE COR ATLANTIC BLVD + FLORENCE AVE	SY 1725
SO GATE (1960)	132.435	L+T CTR CB RET SW COR ATLANTIC BLVD + FLORENCE AVE	SY 1726
SO GATE (1960)	135.287	L+T 10FT± N BCR @ NW COR FISHBURN AVE + FLORENCE AVE	SY 1729
SO GATE (1960)	139.521	L+T 4FT± E BCR @ NE COR FLORENCE AVE + CORONA AVE	SY 1731
SO GATE (1960)	138.882	L+T 1FT± N BCR @ NW COR SAN LUIS ST + FLORENCE AVE	SY 1732
SO GATE (1960)	138.965	L+BN 1 FT± W BCR SW COR FLORENCE AVE + BEAR AVE	SY 1734
SO GATE (1960)	140.871	CSMON IN WELL 12IN DN @ OR NR C/L INT FLORENCE AVE + CALIFORNIA AVE MKD (WATTS L-4)	SY 1735A
SO GATE (1960)	141.540	RR SPK N CB 36FT± W BCR @ NW COR FLORENCE AVE + CALIFORNIA AVE 36FT± N + 65FT± W C/L INT CB MKD (4D 2009)	SY 1736A

QUAD-YEAR	ELEV	DESCRIPTION (INCLUDE QUAD AND YEAR IN DESCRIPTION)	BM NUMBER
SO GATE (1960)	138.016	L+B 13FT± N BCR E CB SALT LAKE AVE + WALNUT ST NW COR	SY 1737
SO GATE (1960)	136.985	L+SPK IN GAS ISLAND SE COR LIVE OAK ST + SALT LAKE AVE 49FT± E 90FT± S C/L INT	SY 1738
SO GATE (1960)	133.822	L+T S CB 15FT± S C/L FLOWER ST 85FT± SE C/L INT FLOWER ST + SALT LAKE AVE	SY 1739
SO GATE (1960)	130.404	L+T N CB CLARA ST 45FT± E BCR FRONT HSE NO 3907 (CLARA ST)	SY 1740
SO GATE (1960)	130.300	L+T S CB CLARA ST 2FT± E BCR FRONT HSE NO 3907	SY 1741
SO GATE (1960)	129.853	L+BN 3FT± FROM END N CB @ NW COR OTIS AVE + CLARA ST 50FT± N C/L INT	SY 1742
SO GATE (1960)	129.548	L+BN CB 53FT± E + 20FT± N C/L INT CLARA ST + OTIS AVE 3FT± FROM END OF CB	SY 1743
SO GATE (1960)	131.251	L+BN N CB CLARA ST FRONT OF HSE NO 4251	SY 1744
SO GATE (1960)	127.535	L+BN 1.5FT± W BCR NW COR CLARA ST + ATLANTIC BLVD	SY 1746
SO GATE (1960)	127.824	L+BN E BCR SE COR CLARA ST + ATLANTIC BLVD	SY 1747
SO GATE (1960)	129.760	L+BN N CB CLARA ST FRONT HSE NO 4707 850FT± E ATLANTIC BLVD	SY 1748
SO GATE (1960)	125.613	L+BN N CB CLARA ST FRONT HSE NO 4845 1700FT± S ATLANTIC BLVD	SY 1749
SO GATE (1960)	119.469	L+BN N CB CLARA ST FRONT HSE NO 5125 800FT± E WILCOX AVE	SY 1752
SO GATE (1960)	119.576	L+BN N CB CLARA ST 1FT± E BCR OF CB OF W APPROACH TO BRIDGE OVER LA RIV	SY 1753
SO GATE (1960)	135.946	L+T S CB CLARA ST 40FT± W OF W END OF BRIDGE OVER LA RIV	SY 1754
SO GATE (1960)	137.135	L+TAG (USED NO 2301) IN CONC ABUT @ NW COR BRIDGE OVER LA RIV @ CLARA ST	SY 1755
SO GATE (1960)	137.324	RD BR CAP IN CONC ABUT @ NE COR BRIDGE OVER LA RIV @ CLARA ST	SY 1756
SO GATE (1960)	137.332	RD BR CAP IN CONC ABUT @ SE COR BRIDGE OVER LA RIV @ CLARA ST	SY 1757
SO GATE (1960)	120.967	L+T 2FT± N END CB RET SW COR VIA JAQUELITAS + OLD RIVER SCHOOL RD	SY 1845
SO GATE (1960)	119.626	L+T S CB VIA AMORITA 2FT± W BCR @ SW COR VIA AMORITA + OLD RIVER SCHOOL RD	SY 1846
SO GATE (1960)	117.643	L+T E CB OLD RIVER SCHOOL RD 1FT± N CB RET @ NE COR OLD RIVER SCHOOL RD + MULLER ST	SY 1847
SO GATE (1960)	115.913	L+T 4FT± N CB RET @ NE COR OLD RIVER SCHOOL RD + FOSTORIA ST	SY 1848
SO GATE (1960)	114.700	L+T E CB OLD RIVER SCHOOL RD 6FT± N CB RET @ NE COR OLD RIVER SCHOOL RD + 4TH PL TO E	SY 1849

QUAD-YEAR	ELEV	DESCRIPTION (INCLUDE QUAD AND YEAR IN DESCRIPTION)	BM NUMBER
SO GATE (1960)	113.815	L+T E CB OLD RIVER SCHOOL RD 7FT± N CB RET @ NE COR OLD RIVER SCHOOL RD + 3RD ST TO E	SY 1850
SO GATE (1960)	111.982	L+T 18FT± NLY OF CB RET @ SW COR OLD RIVER SCHOOL RD + DINWIDDIE ST	SY 1851
SO GATE (1960)	111.674	RDBM TAG W CB 1FT± N CS ON NW COR OLD RIVER SCHOOL RD + FIRESTONE BLVD 80 FT± N + 28 FT± W C/L INT	SY 1852A
SO GATE (1960)	111.895	CE TAG IN CB ON NE COR OLD RIVER SCHOOL RD + FIRESTONE BLVD 72FT± N + 28FT± E C/L INT	SY 1853A
SO GATE (1960)	107.636	L+T APPROX CTR RET @ NE COR OLD RIVER SCHOOL RD + ADWEN ST	SY 1854
SO GATE (1960)	106.268	L+T 1FT± N CB RET @ NE COR LUXOR ST + OLD RIVER SCHOOL RD	SY 1855
SO GATE (1960)	104.971	L+BN CONC BASE (76) SIGN OF SERVICE STA @ NE COR OLD RIVER SCHOOL RD + STEWART + GRAY RD	SY 1856
SO GATE (1960)	104.481	RDBM TAG CB 3FT± W/O BCR @ SE COR STEWART + GRAY RD + OLD RIVER SCHOOL RD 25FT± S/O + 50FT± E/O C/L INT	SY 1857A
SO GATE (1960)	105.748	L+T SLY END ISLAND OF SERVICE STA @ SW COR OLD RIVER SCHOOL RD + STEWART + GRAY RD	SY 1858
SO GATE (1960)	102.320	L+T S EDGE CONC DRWY HSE 12006 80FT± S C/L LAURA ST @ SE COR OLD RIVER SCHOOL RD + LAURA ST	SY 1859
SO GATE (1960)	99.570	L+T CTR RET @ NE COR OLD RIVER SCHOOL RD + RUNDELL ST	SY 1860
SO GATE (1960)	98.770	L+T S EDGE CONC DRWY 40FT± E C/L OLD RIVER SCHOOL ROAD TO HSE 12320	SY 1861
SO GATE (1960)	109.601	RD BRASS CAP IN HDWL 21FT± N/O C/L SOUTHERN AVE (STEWART+GRAY RD) 75FT± E/O BRIDGE OVER RIO HONDO RIVER MKD (RDBM 84)	SY 1863A
SO GATE (1960)	104.826	CO SUR MON IN WELL 10INCHES DN @ OR NEAR C/L INT STEWART+GRAY RD + PERNELL AVE NAIL + COPPER TAG IN CONC MON	SY 1864A
SO GATE (1960)	105.787	RDBM TAG E CB 1FT± N/O BCR @ NE COR STEWART + GRAY RD + PERNELL AVE 60FT± N/O + 20FT± E/O C/L INT	SY 1865A
SO GATE (1960)	106.066	L+T 2FT± W CB RET @ NW COR JULIUS AVE + STEWART + GRAY RD	SY 1866
SO GATE (1960)	106.329	L + BRAD E CB @ BCR @ NE COR STEWART + GRAY RD + JULIUS AVE 62FT± N + 18FT± E/O C/L INT MKD (BM)	SY 1867A
SO GATE (1960)	108.461	RDBM TAG N CB 1.5FT± W/O BCR @ NE COR STEWART + GRAY RD + RIVES AVE 30FT± N/O + 45FT± E/O C/L INT	SY 1868A
SO GATE (1960)	108.451	RDBM TAG N CB .3FT± W/O BCR @ NW COR STEWART + GREY RD + RIVES AVE 30FT± N + 55FT± E C/L INT	SY 1869A
BASELINE (1955)	109.791	L+T 1FT± S BCR @ SE COR PARAMOUNT BLVD + STEWART + GRAY RD	SY 1870A
SO GATE (1960)	126.844	L+T N CB FLORENCE AVE C/L PROD RIVES AVE MKD (BM)	SY 1871

QUAD-YEAR	ELEV	DESCRIPTION (INCLUDE QUAD AND YEAR IN DESCRIPTION)	BM NUMBER
SO GATE (1960)	93.396	L+T N END GAS ISLAND 30FT± W C/L GARFIELD PL 85FT± S C/L IMPERIAL HWY	SY 1894
SO GATE (1960)	87.485	CS MON 8FT± SW OF ANG PT @ GARDENDALE AVE + GARFIELD AVE	SY 1898
SO GATE (1960)	85.980	L+T W CB GARFIELD AVE C/L PROD TAFT AVE	SY 1899
SO GATE (1960)	85.456	L+BN 15FT± E CB RET NE COR MCKINLEY AVE + GARFIELD AVE	SY 1900
SO GATE (1960)	83.567	L+BN 15FT± E CB RET @ NE COR ROOSEVELT AVE + GARFIELD AVE (CB IS CRACKED)	SY 1901
SO GATE (1960)	81.244	L+BN W CB GARFIELD AVE 15FT± N CB RET @ NW COR GARFIELD AVE + MAIN ST	SY 1902
SO GATE (1960)	78.992	L+BN IN E CB 1FT± N BCR @ SE COR GARFIELD AVE + CENTURY BLVD 107FT± S + 38FT± E C/L INT MKD (BM)	SY 1904A
SO GATE (1960)	78.993	L+BN IN W CB 1FT± N BCR @ SW COR GARFIELD AVE + CENTURY BLVD 36FT± S + 38FT± W C/L INT MKD (BM)	SY 1905A
SO GATE (1960)	76.404	CS MON 6FT± W C/L GARFIELD AVE APPROX C/L WESTOVER ST TO THE E	SY 1906
SO GATE (1960)	77.092	L+BN 55FT± S C/L WESTOVER ST + 9FT± W C/L GARFIELD AVE	SY 1907
SO GATE (1960)	76.389	L+T C/L INT MENDY ST + GARFIELD AVE	SY 1908
SO GATE (1960)	72.064	CS MON 8FT± W C/L GARFIELD AVE 8FT± N C/L ROSECRANS AVE	SY 1909
SO GATE (1960)	72.247	L+T @ C/L INT RICHFIELD ST + GARFIELD AVE	SY 1910
SO GATE (1960)	72.176	L+T NE END GAS ISLAND @ NW COR EXETER ST + GARFIELD AVE	SY 1911
SO GATE (1960)	70.608	L+T C/L INT PETROL ST + GARFIELD AVE	SY 1912
BASELINE (1955)	70.014	L+T IN CONC APRON TO BLDG 7002 COMPTON BLVD 45FT± E C/L ORANGE AVE + 35FT± S C/L COMPTON BLVD @ SE COR	SY 1930A
BASELINE (1955)	69.955	L+T W END OF CONC APRON TO BLVD 7000 COMPTON BLVD 25FT± E C/L ORANGE AVE + 45FT± S C/L COMPTON BLVD	SY 1931A
BASELINE (1955)	68.840	L+T W CB EL CAMINO AVE 6FT± N CB RET @ NW COR COMPTON BLVD + EL CAMINO AVE	SY 1932B
BASELINE (1955)	68.955	L+T E CB 15FT± S CB RET @ SE COR FAULKNER AVE + COMPTON BLVD	SY 1933A
BASELINE (1955)	68.922	L+T W CB SAN JOSE AVE 5FT± N CB RET @ NW COR SAN JOSE AVE + 1ST ALLEY N COMPTON BLVD	SY 1934B
BASELINE (1955)	68.596	L+T W CB SAN JOSE AVE 8FT± S CB RET @ SW COR SAN JOSE AVE + 1ST ALLEY S COMPTON BLVD	SY 1936A
BASELINE (1955)	67.415	CS MON C/L SAN JOSE AVE + APPROX N P/L OF 1ST ALLEY S COMPTON 130FT± S C/L INT SAN JOSE AVE + COMPTON BLVD	SY 1937B

QUAD-YEAR	ELEV	DESCRIPTION (INCLUDE QUAD AND YEAR IN DESCRIPTION)	BM NUMBER
BASELINE (1955)	69.327	L+T W EDGE CONC APRON TO GARAGE OF HSE 15111 SAN JOSE AVE 135FT± W C/L SAN JOSE AV + 10FT± S C/L 1ST ALLEY S COMPTON BLVD	SY 1938A
BASELINE (1955)	67.099	CS MON @ C/L INT OF COMPTON BLVD + SAN ANTONIO AVE IN WELL W/COVER 1FT DEEP STAMPED (RE 329)	SY 1940A
BASELINE (1955)	88.545	RDBM TAG IN EAST ABUT. @ NE COR OF COMPTON BLVD BRIDGE OVER LA RIVER 0.4FT± N OF CB FACE	SY 1941B
BASELINE (1955)	91.909	SET RDBM TAG IN N CB @ CTR PIER OF COMPTON BLVD BRIDGE OVER LA RIVER	SY 1942A
BASELINE (1955)	90.124	RDBM TAG IN WEST ABUT. @ NW COR OF COMPTON BLVD BRIDGE OVER LA RIVER 0.65FT± N OF CB FACE	SY 1943B
BASELINE (1955)	78.240	RDBM TAG IN SOUTH CB COMPTON BLVD 65FT± W OF BRIDGE NO 53-823 OVER THE (LONG BEACH FREEWAY) 250FT± E OF GIBSON AVE	SY 1944B
BASELINE (1955)	68.709	L+T 2FT± N CB RET @ NW COR 1ST ALLEY N COMPTON BLVD ON GIBSON ST	SY 1945B
BASELINE (1955)	67.883	L+T 7FT± S CB RET @ SW COR 1ST ALLEY S COMPTON BLVD ON GIBSON ST	SY 1947B
BASELINE (1955)	67.551	L+T 2.5FT± S CB RET @ SE COR 1ST ALLEY S COMPTON BLVD ON WILLIAMS AVE	SY 1948A
BASELINE (1955)	67.142	CS MON @ C/L INT WILLIAMS AVE + 1ST ALLEY S COMPTON BLVD	SY 1949A
BASELINE (1955)	67.680	L+T S CB COMPTON BLVD 10FT± W CB RET @ SW COR COMPTON BLVD + WILLIAMS AVE	SY 1950A
BASELINE (1955)	68.466	L+T W CB WILLIAMS AVE 20FT± N CB RET @ NW COR WILLIAMS AVE + 1ST ALLEY N COMPTON BLVD	SY 1951A
BASELINE (1955)	67.260	L+T S CB COMPTON BLVD 8FT± W CB RET @ SW COR COMPTON BLVD + FRAILEY AVE	SY 1952A
BASELINE (1955)	66.905	L+SPK S CB COMPTON BLVD 12FT± W CB RET @ SW COR COMPTON BLVD + LIME AVE (SPK MKD T-376)	SY 1953A
BASELINE (1955)	66.900	L+T CTR CB RET @ SE COR COMPTON BLVD + ATLANTIC AVE	SY 1954B
BASELINE (1955)	66.684	LA METRO WATER DIST BR DISC IN CONC SQ 31.3FT± S OF C/L OF COMPTON BLVD 13.3FT± W OF CB RET @ SW COR COMPTON BLVD + ATLANTIC AVE 78FT± SW OF C/L INT MKD (MET WATER DIST 56-W)	SY 1955B
SD GATE (1960)	69.226	L+SPK E CB GIBSON ST 16FT± S CB RET @ SW COR GIBSON ST + SAN MARCUS ST MKD (9-A-50) + (T-419)	SY 1956
SD GATE (1960)	69.411	L+T W CB GIBSON ST + C/L PROD SAN MARCUS ST	SY 1957A
SD GATE (1960)	69.997	L+SPK E CB GIBSON ST 16FT± S CB RET @ SE COR GIBSON ST + SAN MATEO ST MKD (T-420)	SY 1958A
SD GATE (1960)	70.178	L+SPK E CB GIBON ST 16FT± S CB RET @ SE COR GIBSON ST + SAN VINCENTE ST MKD (10-A-50) + (T-421)	SY 1959A
SD GATE (1960)	69.918	L+SPK E CB GIBSON ST 14FT± S CB RET @ SE COR GIBSON ST + SAN MIGUEL ST MKD (T-422)	SY 1960A

QUAD-YEAR	ELEV	DESCRIPTION (INCLUDE QUAD AND YEAR IN DESCRIPTION)	BM NUMBER
SO GATE (1960)	70.998	L+SPK E CB GIBSON ST 12FT± S CB RET @ SE COR GIBSON ST + SAN JUAN ST MKD (T-423)	SY 1961A
SO GATE (1960)	71.485	L+SPK E CB GIBSON ST 12FT± S CB RET @ SE COR GIBSON ST + SAN CARLOS ST MKD (T-424)	SY 1962A
SO GATE (1960)	71.822	L+SPK 13FT± S BCR @ SE COR GIBSON ST + SAN RAFAEL ST MKD (T-425)	SY 1963A
SO GATE (1960)	71.470	RD MON @ C/L INT GIBSON AVE + ROSECRANS AVE	SY 1964A
BASELINE (1955)	73.678	L+N SE COR CONC SIGNAL BASE 20FT± S @ C/L COMPTON BLVD W SIDE UPRR	SY 1993A
BASELINE (1955)	83.591	L+T 18FT± W CB RET @ SW COR PARAMOUNT BLVD + GARDENDALE ST	SY 2041
SO GATE (1960)	125.986	L+B 6INCHES± N CB RET @ NE COR WILEY BURKE AVE +FLORENCE AVE	SY 2132
SO GATE (1960)	126.266	L+B 4IN± N CB RET @ NW COR HORLEY AVE + FLORENCE AVE	SY 2133
SO GATE (1960)	126.842	L+BN 4FT± E CB RET @ NE COR SMALLWOOD AVE + FLORENCE AVE	SY 2134
BASELINE (1955)	73.442	L+T E CB ALAMEDA ST 33FT± S OF N CB ORIS ST PROD	SY 2351
BASELINE (1955)	71.249	L+T E CB ALAMEDA ST ON C/L PROD MEALY ST	SY 2352
BASELINE (1955)	72.180	L+T E CB 2FT± S BCR @ SE COR ALAMEDA ST + ROSECRANS BLVD	SY 2353A
BASELINE (1955)	69.456	L+T E CB 26FT± E C/L ALAMEDA ST W BARREL + C/L PROD MAPLE ST	SY 2354A
BASELINE (1955)	68.972	L+BN N CB COMPTON BLVD 13FT± E OF E RAIL OF SPRR 29FT± W CB RET @ NW COR ALAMEDA ST E DR + COMPTON BLVD 60FT± W C/L E DRIVE 28FT± N C/L COMPTON BLVD	SY 2356A
BASELINE (1955)	69.164	L+BN S CB COMPTON BLVD 5FT± E OF E RAIL OF SPRR 29FT± W CB RET @ SW COR ALAMEDA ST E DR + COMPTON BLVD 70FT± W C/L E DRIVE 28FT± N C/L COMPTON BLVD	SY 2357A
BASELINE (1955)	70.370	L+T CTR CB RET @ SE COR ROSECRANS AVE + ALAMEDA ST E BARREL	SY 2419A
SO GATE (1960)	94.314	FC BR DISC IN CONC FLOOR OF BRIDGE OVER LA RIV ON ROSECRANS AVE 6FT± N OF S EDGE @ SW COR BRIDGE MKD (BM 4-30 1957)	SY 2437A
SO GATE (1960)	87.177	RD BM TAG N CB ISLAND 50FT± E OF END BRIDGE OVER LA RIV ON ROSECRANS AVE	SY 2439A
SO GATE (1960)	71.594	CS MON S C/L ROSECRANS AVE 140FT± E C/L ORANGE AVE	SY 2441A
SO GATE (1960)	73.040	CS MON C/L ROSECRANS AVE @ C/L STA 276+58 FRONT HSE NO 7202 1300FT W C/L GARFIELD AVE	SY 2443A
SO GATE (1960)	72.749	L+T S CB @ SE COR GARFIELD AVE + ROSECRANS AVE 25FT± S + 40FT± E C/L INT	SY 2447A

QUAD-YEAR	ELEV	DESCRIPTION (INCLUDE QUAD AND YEAR IN DESCRIPTION)	BM NUMBER
SO GATE (1960)	75.386	L+BN IN CONC BASE 63FT N C/L ROSECRANS AVE + 5FT E OF E RAIL OF UPRR 1320FT W OF C/L PARAMOUNT BLVD	SY 2448
BASELINE (1955)	97.342	COSUR MON IN WELL 10IN DN ON NW COR PARAMOUNT BLVD + IMPERIAL HWY 16FT± W 8FT± N C/L INT MKD (BELL F-10A 1938)	SY 3165A
BASELINE (1955)	98.294	CS MON FLUSH W/MAC PVMT 40FT± N C/L IMPERIAL HWY 35FT± W C/L PARAMOUNT BLVD (BELL F 10A RM NO 2 RE2177)	SY 3166A
BASELINE (1955)	104.631	L+T S CB SPRINGER ST 3FT± W OF END OF CB 70FT± W C/L OF PARAMOUNT BLVD	SY 3168A
BASELINE (1955)	106.608	L+T CONC WK FRONT OF BLDG NO 12161 PARAMOUNT BLVD 54FT± W C/L INT PARAMOUNT BLVD + ALAMEDA ST (PROD)	SY 3170A
BASELINE (1955)	108.682	L+T @ NE COR OF WK OF BLDG NO 12037 PARAMOUNT BLVD 50FT± W C/L PARAMOUNT BLVD	SY 3171A
BASELINE (1955)	108.965	CS MON 13FT± S C/L STEWART + GRAY RD 2FT± W C/L PARAMOUNT BLVD	SY 3172A
BASELINE (1955)	110.474	L+B S CB DEPALMA ST 1FT± W CB RET @ SW COR DEPALMA ST + PARAMOUNT BLVD	SY 3173A
BASELINE (1955)	111.563	L+B N CB CLETA ST 1FT± W CB RET @ NW COR CLETA ST + PARAMOUNT BLVD	SY 3174
BASELINE (1955)	112.372	L+T S CB BROOKMILL RD 2FT± W CB RET @ SW COR BROOKMILL RD + PARAMOUNT BLVD	SY 3175
BASELINE (1955)	116.370	L+T 1ST STEP TO HSE NO 11445 PARAMOUNT BLVD 53FT± W C/L INT PARAMOUNT BLVD + PHLOX ST	SY 3178A
BASELINE (1955)	117.299	L+T W CB PARAMOUNT BLVD 1FT± S CB RET @ SW COR BURNS AVE + PARAMOUNT BLVD	SY 3179A
BASELINE (1955)	116.532	L+T CB RET @ SW COR FIRESTONE BLVD + PARAMOUNT BLVD 9FT± NWLY CB RET	SY 3180
BASELINE (1955)	116.783	L+T CB RET @ NW COR FIRESTONE BLVD + PARAMOUNT BLVD 15FT± NELY CB RET	SY 3181
BASELINE (1955)	116.109	CS MON @ C/L INT 2ND ST + PARAMOUNT BLVD	SY 3182A
BASELINE (1955)	124.200	L+T W CB PARAMOUNT BLVD 2FT± S CB RET SW COR FARM ST + PARAMOUNT BLVD	SY 3183
BASELINE (1955)	124.841	L+T S CB IRWINGROVE DR 1FT± W CB RET @ SW COR IRWINGROVE DR + PARAMOUNT BLVD	SY 3184
SO GATE (1960)	126.232	L+T N CB FLORENCE AV 4FT± W/O CB RET @ NE COR FLORENCE AVE + HORLEY AVE	SY 3187
SO GATE (1960)	125.871	L+T N CB FLORENCE AVE 1FT± W/O CB RET @ NE COR FLORENCE AVE + WILEY-BURKE AVE	SY 3188
SO GATE (1960)	124.369	RDBM TAG N CB .5FT± W/O BCR @ NW COR FLORENCE AVE + OLD RIVER SCHOOL RD 38FT± N + 55FT± W/O C/L INT	SY 3190A
SO GATE (1960)	121.039	L+T N CB FLORENCE AVE 5FT± E CB RET @ NE COR EMIL AVE + FLORENCE AVE @ W END CB	SY 3191

QUAD-YEAR	ELEV	DESCRIPTION (INCLUDE QUAD AND YEAR IN DESCRIPTION)	BM NUMBER
SO GATE (1960)	120.566	CS MON @ C/L INT EMIL AVE + FLORENCE AVE	SY 3192
SO GATE (1960)	120.627	L+T S CB FLORENCE AVE 1FT# E CB RET @ SE COR KRESS AVE + FLORENCE AVE	SY 3193
SO GATE (1960)	120.250	CS MON @ C/L INT KRESS AVE + FLORENCE AVE	SY 3194
SO GATE (1960)	120.133	CS MON @ C/L INT FLORENCE AVE + GRANGER AVE	SY 3195
SO GATE (1960)	119.943	L+T CTR CB RET @ SW COR GARFIELD + FLORENCE AVES	SY 3197
SO GATE (1960)	120.771	L+T S CB FLORENCE AVE 2FT# E CB RET @ SE COR TOLER AVE TO THE N	SY 3198
SO GATE (1960)	121.066	CS MON 5FT# W C/L INT FLORENCE AVE + DARWELL AVE	SY 3200
SO GATE (1960)	120.585	CS MON @ C/L INT FLORENCE AVE + IRA AVE S EDGE	SY 3201
SO GATE (1960)	121.963	CS MON @ C/L INT EL SELINDA AVE + FLORENCE AVE	SY 3203
SO GATE (1960)	121.993	L+T S CB FLORENCE AVE C/L PROD EL SELINDA AVE	SY 3204
SO GATE (1960)	121.725	CS MON @ C/L INT FLORENCE AVE + AJAX AVE	SY 3205
SO GATE (1960)	122.086	L+T CTR CB RET @ NW COR EASTERN AVE + FLORENCE	SY 3207
SO GATE (1960)	125.089	L+BN E CB EASTERN AVE 2FT# S CB RET @ SE COR EASTERN AVE + LUBEC ST	SY 3208
SO GATE (1960)	127.813	L+SPK E CB EASTERN AVE 2FT# S CB RET @ SE COR EASTERN AVE + LOVELAND ST	SY 3209
SO GATE (1960)	129.019	L+T CTR CB RET @ NE COR GAGE AVE + EASTERN AVE	SY 3211
SO GATE (1960)	129.757	L+BN E CB EASTERN AVE OPP S PL OF BLDG NO 6318	SY 3212
SO GATE (1960)	131.666	L+T S CB WATCHER ST 1FT# W CB RET @ SW COR WATCHER ST + EASTERN AVE	SY 3213
BASELINE (1955)	135.722	FC BR DISC 2FT# E OF E CB EASTERN AVE OPP THE END CB RET @ NE COR SLAUSON AVE + EASTERN AVE FLUSH W/MAC PKWY MKD (BM 5-130)	SY 3214
BASELINE (1955)	80.251	BR CAP @ S END W CONC BANNISTER @ MAIN ENT TO THE (FRANCIS WILLARD SCHOOL) 114FT# E C/L ALAMEDA ST + 98FT# S C/L EL SEGUNDO BLVD MKD (W 615 1941)	SY 3741A
BASELINE (1955)	75.919	CS MON 27FT# E C/L ALAMEDA ST + 3FT# S C/L EL SEGUNDO BLVD	SY 3742A
BASELINE (1955)	77.262	L+BN 2FT# W BCR @ SW COR ALAMEDA ST + EL SEGUNDO BLVD	SY 3743A
BASELINE (1955)	166.892	L+BN CTR CB RET NW COR ALAMEDA ST + GAGE AVE	SY 3803A

QUAD-YEAR	ELEV	DESCRIPTION (INCLUDE QUAD AND YEAR IN DESCRIPTION)	BM NUMBER
BASELINE (1955)	167.272	L+T 20FT N C/L PROD GAGE AVE ON THE E CB OF ALAMEDA ST	SY 3804A
BASELINE (1955)	175.892	CS MON 13FT± N FROM THE MOST N PE TRACK RANDOLPH ST + 12FT W FROM MOST W SP RAIL ON ALAMEDA ST	SY 3805A
BASELINE (1955)	179.197	DISC IN S WALL 2FT± E OF THE SW COR + 3FT± ABOVE WK @ THE INT ALAMEDA ST + RANDOLPH ST 8FT± E OF E CB + 8FT± N OF N CB	SY 3806A
BASELINE (1955)	154.451	L+BN 1FT± W CB RET NW COR ALAMEDA ST + FLORENCE AVE	SY 3823A
BASELINE (1955)	154.050	CS MON 1FT± N C/L FLORENCE AVE W SIDE SPRR TRACKS + 6FT± W OF E CB LINE ALAMEDA ST	SY 3824A
BASELINE (1955)	157.633	CS MON SW COR MILLER GASKET CO BLDG 2FT± ABOVE GROUND + 3FT± N OF THE BLDG COR 86FT± E OF E CB ALAMEDA ST + 1FT± N OF THE N CB OF FLORENCE AVE	SY 3825A
BASELINE (1955)	179.881	L+BN 2FT± E BCR @ SW COR SLAUSON AVE + ALAMEDA ST	SY 3835A
BASELINE (1955)	179.431	CS MON C/L SLAUSON AVE 14FT± W OF W RAIL SPRR 20FT± E C/L ALAMEDA ST	SY 3836A
BASELINE (1955)	73.213	DISC NW COR CONC PILLAR OF CONSOLIDATED ROCK PRODUCTS 100FT± E SPRR TRACK 0.15MI± S ORIS ST ON ALAMEDA ST	SY 4129A
BASELINE (1955)	660.63	CS MON IN WELL 4FT± E OF W CB ALAMEDA ST E BARREL 24FT± W C/L ALAMEDA ST E BARREL + 48FT± N C/L COMPTON BLVD MKD (BM 5-21 RE 329 1951)	SY 4130A
SO GATE (1960)	155.934	L+BN 2FT± W CB RET @ SW COR SANTA FE AVE + FLORENCE AVE	SY 4131
SO GATE (1960)	155.981	L+BN 1FT± E CB RET @ SE COR SANTA FE AVE+ FLORENCE AVE	SY 4132
SO GATE (1960)	155.748	L+T S CB FLORENCE AVE C/L PROD RUGBY AVE	SY 4133
SO GATE (1960)	155.861	L+BN W CB 6FT± N BCR @ NW COR FLORENCE AVE + RUGBY AVE 75FT± N+ 18FT± W C/L INT MKD (EL 128)	SY 4134A
SO GATE (1960)	152.066	L+BN S CB FLORENCE AVE 10FT± W C/L MILES AVEPROD	SY 4136
SO GATE (1960)	151.320	L+BN 2FT± N CB RET @ SW COR MOUNTAIN VIEW AVE + FLORENCE AVE	SY 4137
SO GATE (1960)	142.370	CS TRI ANG STA NR C/L INT FLORENCE AVE+STATE ST	SY 4138
SO GATE (1960)	113.137	L+BN TOP CONC ABUT @ E END SOUTHERN AVE BRIDGE OVER RIO HONDO 20FT± S C/L SOUTHERN AVE (STEWART + GRAY RD)	SY 4140
SO GATE (1960)	113.735	L+T E CB IRA AVE 10FT± S C/L GOTHAM ST PROD	SY 4142
SO GATE (1960)	111.541	L+T CTR CB RET @ NW COR GARFIELD AVE + CECELIA ST	SY 4143
SO GATE (1960)	111.780	L+T CTR CB RET @ SE COR GARFIELD AVE + CECELIA ST	SY 4144

QUAD-YEAR	ELEV	DESCRIPTION (INCLUDE QUAD AND YEAR IN DESCRIPTION)	BM NUMBER
BASELINE (1955)	68.527	CS MON 14FT± N C/L COMPTON BLVD + 57FT± E C/L ORANGE AVE IN WELL W/COVER 10IN DEEP MKD (BM 6-15 1951 RE 63)	SY 4323A
BASELINE (1955)	67.575	L+SPK N CB COMPTON BLVD 10FT± E C/L WHITE AVE PROD MKD (T-373)	SY 4568A
BASELINE (1955)	67.987	L+SPK 3FT± E CB RET @ SE COR COMPTON BLVD + BRADFIELD AVE	SY 4571A
BASELINE (1955)	66.492	CITY OF COMPTON MON IN WELL 18IN DP C/L COMPTON BLVD + C/L PROD BRADFIELD AVE N	SY 4572A
BASELINE (1955)	66.754	CITY OF COMPTON MON IN WELL 12IN DP @ C/L INT COMPTON BLVD + LONG BEACH BLVD 5FT± N OF MON TO THE S	SY 4574A
BASELINE (1955)	67.086	RDBM TAG E CB BURRIS AVE 15FT± N CB RET @ NE COR COMPTON BLVD	SY 4575A
BASELINE (1955)	66.639	L+T 15FT± S CB RET W CB BURRIS AVE @ SW COR COMPTON BLVD	SY 4576A
BASELINE (1955)	64.917	L+SPK CTR CB RET @ SE COR SANTA FE AVE + COMPTON BLVD	SY 4577A
BASELINE (1955)	65.180	L+SPK 1FT± N CB RET @ NE COR SANTA FE AVE + COMPTON BLVD	SY 4578A
BASELINE (1955)	165.289	L+T S CB SLAUSON AVE 192FT W + 21FT S C/L INT DOWNEY RD + SLAUSON AVE FRONT OF POWER POLE	SY 4665
BASELINE (1955)	162.523	CS MON WELL 2IN DN 32FT NLY S CB LINE SLAUSON AVE PROD 11FT ELY W CB LINE EVERETT AVE PROD MKD (LA CO SUR CONTROL SYS TRAVERSE STA WATTS L-2B RE4233)	SY 4666
BASELINE (1955)	139.447	CS MON TOP CONC POST 12IN DN 1FT± W OF E CB ALAMEDA ST ON C/L PROD NADEAU ST MKD (WATTS 1 4A 1938 RE 2177)	SY 5767
BASELINE (1955)	135.415	CS MON INGRANITE POST SPRR ABUT 0.4MI± N FIRESTONE BLVD 90FT± N OF STA + 11FT± E OF E RAIL MKD (A33 1920)	SY 5768
BASELINE (1955)	117.783	CS MON 2IN DN ON ALAMEDA ST 134FT± N C/L 92ND ST + 40FT± W OF W RAIL SPRR MKD (WATTS 1 6 RE 2177 1938)	SY 5770
BASELINE (1955)	120.280	CS MON CONC FOUNDATION SW LEG TRANSMISSION LINE TOWER NO 265D3 66FT± E C/L ALAMEDA ST + 118FT± N C/L SOUTHERN AVE MKD (LC 769 1945)	SY 5771
BASELINE (1955)	111.765	CS BR CAP 2IN DN ON ALAMEDA ST 28FT± W OF W RAIL SPRR ON N EDGE PVMT TWEEDY BLVD MKD (WATTS 1 7A RE 2177 1938)	SY 5772
BASELINE (1955)	113.968	R D MON CONC BASE OF RR CROSSING SIGN NO B 6 491 40FT± W OF W EDGE PVMT ALAMEDA ST 30FT N C/L TWEEDY BLVD MKD (BM 30)	SY 5773
BASELINE (1955)	103.387	CS MON IN CONC POST 2IN UP 1FT± E OF E CB ALAMEDA ST + 199FT± N C/L CENTURY BLVD	SY 5775
BASELINE (1955)	102.457	CS MON IN CONC POST 3FT± W OF W CB ALAMEDA ST + 199FT± N C/L CENTURY BLVD	SY 5776
BASELINE (1955)	99.713	CS MON 36IN DN ON ALAMEDA ST 20FT± W OF W RAIL SPRR + 17FT± N OF N EDGE PVMT CENTURY BLVD MKD (WATTS I 8 RE 2177 1938)	SY 5777

QUAD-YEAR	ELEV	DESCRIPTION (INCLUDE QUAD AND YEAR IN DESCRIPTION)	BM NUMBER
BASELINE (1955)	97.716	CS MON FLUSH ON ALAMEDA ST 34FT± W OF RAIL SPRR + 16 FT± RR CROSSING SIGNAL MKD I 9 RE 2177193	SY 5778
BASELINE (1955)	91.794	LACE HEX MON IN WELL 32FT± E C/L ALAMEDA ST + 34FT± S C/L IMPERIAL HWY	SY 5779
BASELINE (1955)	91.669	L+FLT HD SPK 10FT± S BCR @ SE COR 25FT± E C/L ALAMEDA ST + 70FT± S C/L IMPERIAL HWY	SY 5780
SO GATE (1960)	109.520	L+BN E CB 1FT± N BCR @ NE COR EASTERN AVE + GARFIELD AVE 155FT± N + 40FT± E C/L INT	SY 6091
SO GATE (1960)	109.968	CT SPK W CB EASTERN AVE NR SIGNAL 40FT± W C/L + 25FT± N C/L PROD GARFIELD AVE MKD (SD 2159)	SY 6092
SO GATE (1960)	108.925	CT SPK W CB 43FT± N BCR @ NW COR GARFIELD AVE + FIRESTONE BLVD 130FT± N 40FT± W C/L INT MKD (SD 2156)	SY 6093
SO GATE (1960)	108.933	RAM SET 10FT± S BCR @ NE COR GARFIELD AVE + FIRESTONE BLVD 65FT± N C/L + 43FT± E C/L INT CB MKD (CHC BM NO 9)	SY 6094
SO GATE (1960)	103.488	L+BN W CB @ N END OF CATCH BASIN ON NW COR GARFIELD AVE + SOUTHERN AVE 175FT± N + 40FT± W C/L INT MKD (BM)	SY 6095
SO GATE (1960)	103.761	L+BN E CB @ S END OF CATCH BASIN @ NE COR GARFIELD AVE + SOUTHERN AVE 170FT± N + 40FT± E INT MKD (BM)	SY 6096
SO GATE (1960)	88.267	L+T N CB 8FT± ELY BCR @ NELY COR GARFIELD AVE + GARDENDALE ST 30FT± N + 58FT± ELY C/L INT	SY 6097
SO GATE (1960)	114.022	L+BR E CB 23FT± N BCR @ NE COR GARFIELD AVE + SCOUT AVE 86FT± N + 40FT± E C/L INT	SY 6098
SO GATE (1960)	116.317	L+BN E CB 20FT± S BCR @ SE COR GARFIELD AVE + CLARA ST 55FT± S + 40FT± E C/L INT MKD (SD 2163 BM)	SY 6099
SO GATE (1960)	116.591	L+T W CB 5FT± S BCR @ NW COR GARFIELD AVE + CLARA ST 30FT± N + 40 FT± E C/L INT	SY 6100
SO GATE (1960)	107.118	RDBM TAG W CB OLD RIVER SCHOOL RD 28FT± W C/L + 3FT± S C/L PROD BROOKMILL RD	SY 6110
SO GATE (1960)	102.742	CUT SK W EDGE PVMT OLD RIVER SCHOOL RD 9FT± W C/L + 50FT± N C/L LAURA ST	SY 6111
SO GATE (1960)	99.586	L+T S CB 41N± E BCR @ SE COR OLD RIVER SCHOOL RD + RUNDELL ST 15FT± S + 55FT± E C/L INT MKD (BM)	SY 6112
SO GATE (1960)	96.262	L+T E CB 4FT± S BCR @ NE COR OLD RIVER SCHOOL RD + QUILL DR 48FT± N + 30FT± E C/L INT MKD (BM)	SY 6113
SO GATE (1960)	96.043	L+BN S CB 18FT± W BCR @ SW COR OLD RIVER SCHOOL RD + QUILL DR 18FT± S + 62FT± W C/L INT MKD (BM)	SY 6114
SO GATE (1960)	93.273	CE TAG 10FT± S BCR @ SW COR IMPERIAL HWY + OLD RIVER SCHOOL RD 64FT± N + 34FT± W C/L INT	SY 6115
BASELINE (1955)	139.933	MON IN WELL 12IN DN 57FT N/O + 41FT E/O C/L INT OF SLAUSON AVE + ALAMO AVE MRKD (BM 4-21 1951)	SY 6170